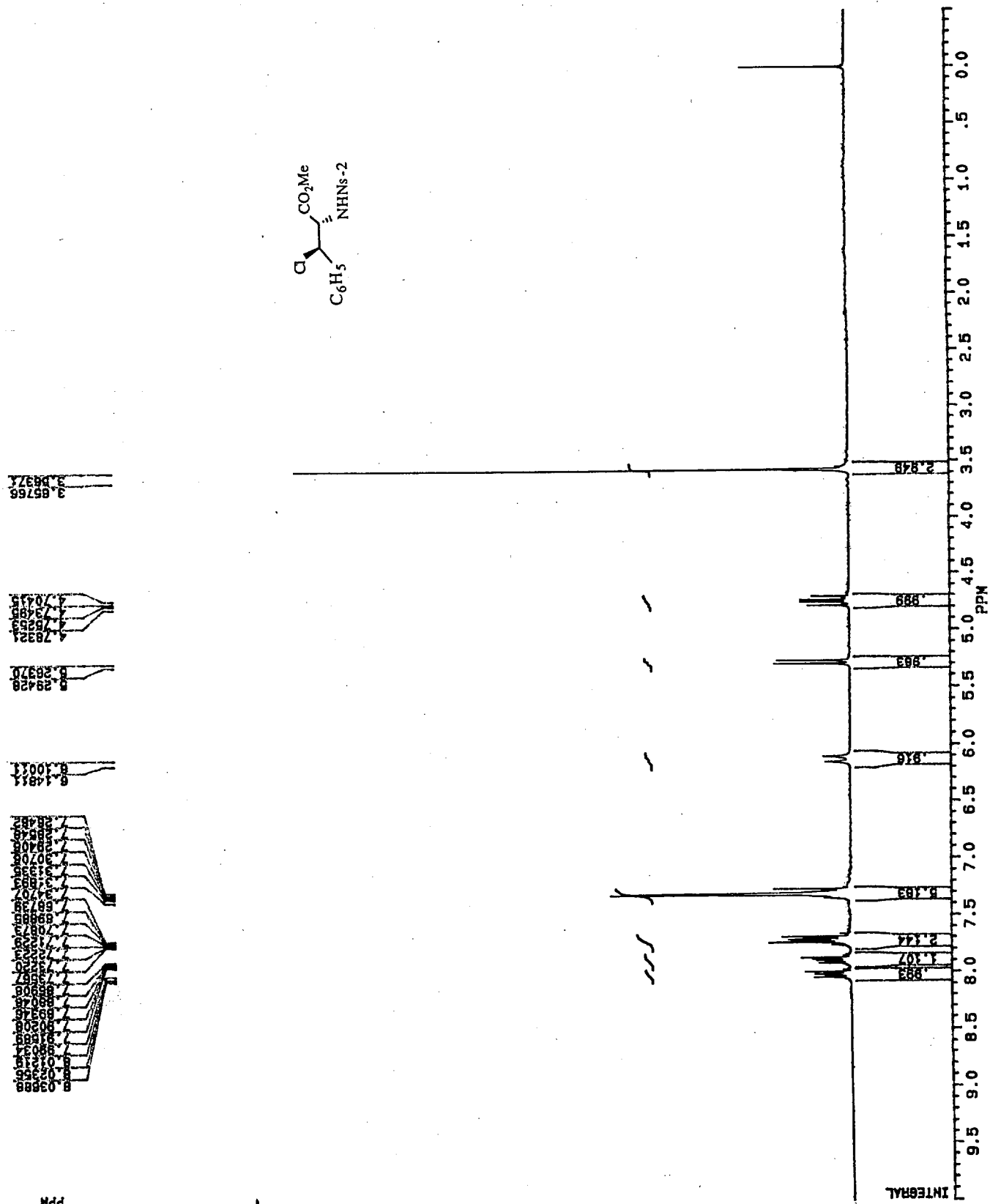
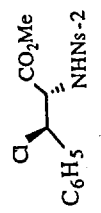




CPH217.001
 DATE 10-11-0
 SF 200.132
 SY 80.1300000
 O1 3472.000
 SI 16384
 TD 16384
 SM 3205.128
 HZ/PT .391
 PM 2.0
 RD 1.500
 AQ 2.556
 RG 20
 NS 24
 TE 297
 FM 4100
 O2 0.0
 DP 63L P0
 LB 0.0
 GB 0.0
 CY 30.00
 F1 14.00
 F2 10.0000P
 HZ/CM 70.047
 PPM/CM 2339.350
 SR 2339.33



2.85766
 2.84374

4.78324
 4.76253
 4.74182
 4.72111

8.39428
 8.38970

8.14814
 8.10031

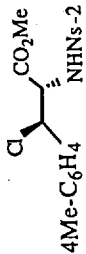
8.03888
 8.02356
 8.00824
 7.99292
 7.97760
 7.96228
 7.94696
 7.93164
 7.91632
 7.90100
 7.88568
 7.87036
 7.85504
 7.83972
 7.82440
 7.80908
 7.79376
 7.77844
 7.76312
 7.74780
 7.73248
 7.71716
 7.70184
 7.68652
 7.67120
 7.65588
 7.64056
 7.62524
 7.60992
 7.59460
 7.57928
 7.56396
 7.54864
 7.53332
 7.51800
 7.50268
 7.48736
 7.47204
 7.45672
 7.44140
 7.42608
 7.41076
 7.39544
 7.38012
 7.36480
 7.34948
 7.33416
 7.31884
 7.30352
 7.28820
 7.27288
 7.25756
 7.24224
 7.22692
 7.21160
 7.19628
 7.18096
 7.16564
 7.15032
 7.13500
 7.11968
 7.10436
 7.08904
 7.07372
 7.05840
 7.04308
 7.02776
 7.01244
 6.99712
 6.98180
 6.96648
 6.95116
 6.93584
 6.92052
 6.90520
 6.88988
 6.87456
 6.85924
 6.84392
 6.82860
 6.81328
 6.79796
 6.78264
 6.76732
 6.75200
 6.73668
 6.72136
 6.70604
 6.69072
 6.67540
 6.66008
 6.64476
 6.62944
 6.61412
 6.59880
 6.58348
 6.56816
 6.55284
 6.53752
 6.52220
 6.50688
 6.49156
 6.47624
 6.46092
 6.44560
 6.43028
 6.41496
 6.39964
 6.38432
 6.36900
 6.35368
 6.33836
 6.32304
 6.30772
 6.29240
 6.27708
 6.26176
 6.24644
 6.23112
 6.21580
 6.20048
 6.18516
 6.16984
 6.15452
 6.13920
 6.12388
 6.10856
 6.09324
 6.07792
 6.06260
 6.04728
 6.03196
 6.01664
 6.00132
 5.98600
 5.97068
 5.95536
 5.94004
 5.92472
 5.90940
 5.89408
 5.87876
 5.86344
 5.84812
 5.83280
 5.81748
 5.80216
 5.78684
 5.77152
 5.75620
 5.74088
 5.72556
 5.71024
 5.69492
 5.67960
 5.66428
 5.64896
 5.63364
 5.61832
 5.60300
 5.58768
 5.57236
 5.55704
 5.54172
 5.52640
 5.51108
 5.49576
 5.48044
 5.46512
 5.44980
 5.43448
 5.41916
 5.40384
 5.38852
 5.37320
 5.35788
 5.34256
 5.32724
 5.31192
 5.29660
 5.28128
 5.26596
 5.25064
 5.23532
 5.22000
 5.20468
 5.18936
 5.17404
 5.15872
 5.14340
 5.12808
 5.11276
 5.09744
 5.08212
 5.06680
 5.05148
 5.03616
 5.02084
 5.00552
 4.99020
 4.97488
 4.95956
 4.94424
 4.92892
 4.91360
 4.89828
 4.88296
 4.86764
 4.85232
 4.83700
 4.82168
 4.80636
 4.79104
 4.77572
 4.76040
 4.74508
 4.72976
 4.71444
 4.69912
 4.68380
 4.66848
 4.65316
 4.63784
 4.62252
 4.60720
 4.59188
 4.57656
 4.56124
 4.54592
 4.53060
 4.51528
 4.50000

ppm

1000



CPH622.001
 DATE 14-3-1
 SF 200.132
 SY 80.1300000
 O1 3472.000
 SI 16384
 TD 16384
 SW 3205.128
 HZ/PT .391
 RM 2.0
 RD 1.500
 AG 2.556
 RG 40
 NS 40
 TE 297
 FW 4100
 O2 0.0
 DP 63L P0
 LB 0.0
 GB 0.0
 CX 30.00
 CY 12.00
 F1 10.000P
 F2 -.500P
 HZ/CM 70.047
 PPM/CM .350
 SR 2340.11



00036
 0031R

4.98520

2.29938

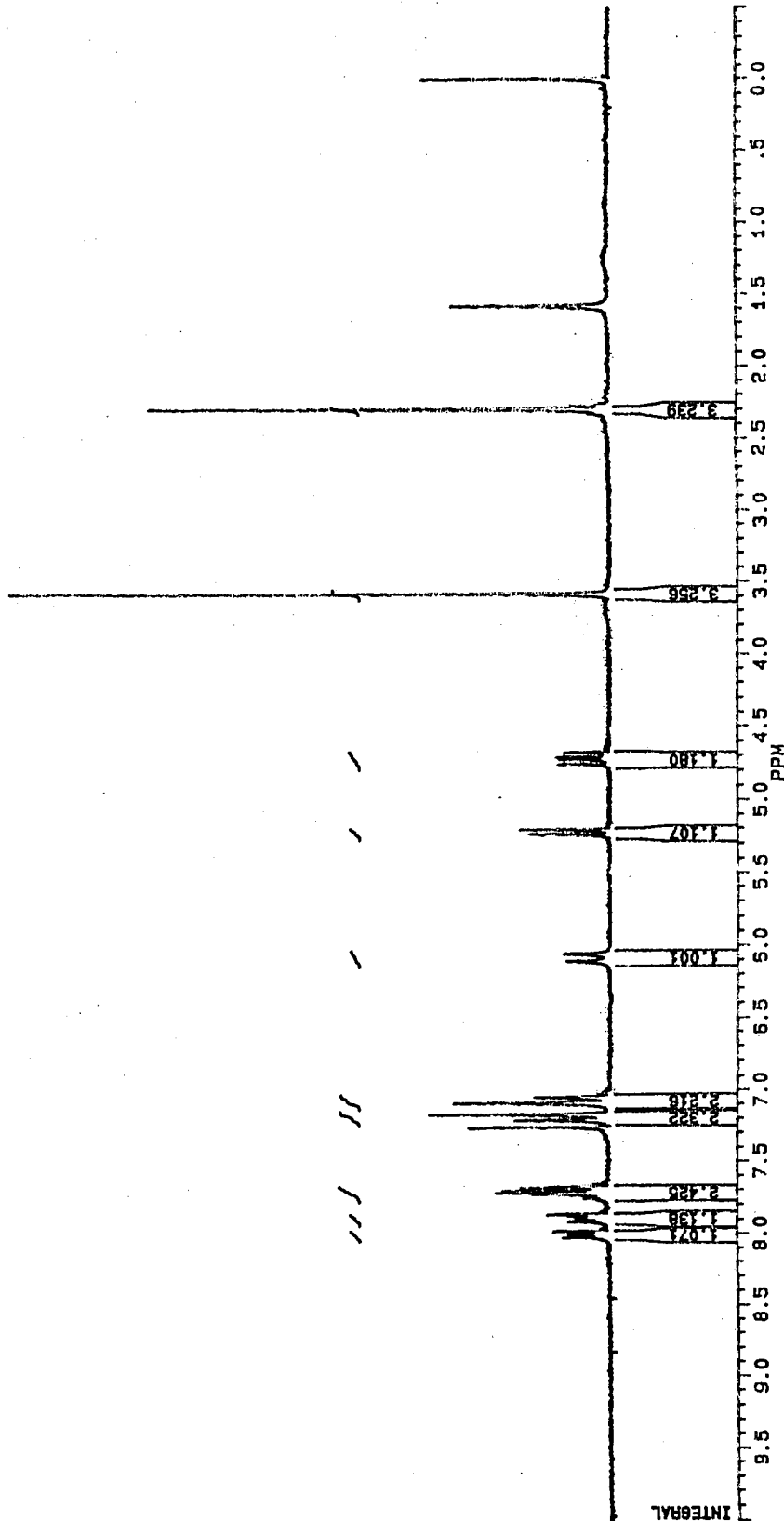
3.58140

4.75838
 4.72699
 4.71096
 4.67964

5.24056
 5.20908

6.10417
 6.05558

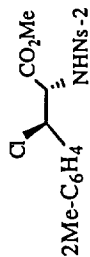
8.02510
 7.97922
 7.86479
 7.72455
 7.71689
 7.70046
 7.68139
 7.67713
 7.66248
 7.59228
 7.52213
 7.47117
 7.40039
 7.05036



PPM



SPC3 DATE 31-10-0
 SF 200.132
 SY 80.130000
 OI 3472.000
 SI 16384
 TD 16384
 SM 3205.128
 HZ/PT .391
 PW 2.0
 RD 1.500
 AG 2.555
 RG 16
 NS 16
 TE 297
 FW 4100
 O2 0.0
 DP 63L P0
 LB 0.0
 GB 0.0
 CX 30.00
 CY 16.00
 F1 10.000P
 F2 .500P
 HZ/CM 70.047
 PPM/CM .350
 SR 2339.33



00383
 .00044

2.38064

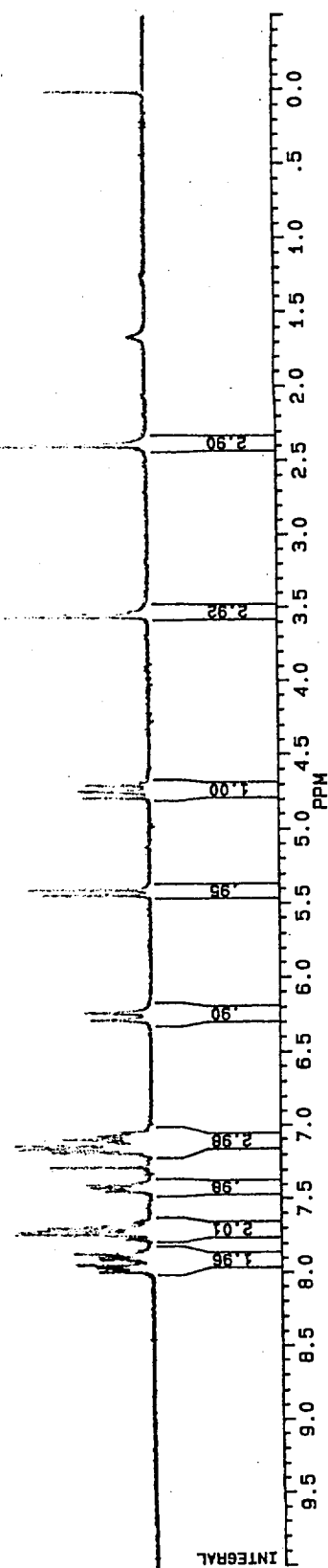
3.54585
 3.54094

4.77760
 4.77430
 4.74025
 4.73553
 4.73026
 4.72564
 4.69186
 4.68838

5.42988
 5.39283

6.22152
 6.25928
 7.06694
 7.07071
 7.08685
 7.12486
 7.14390
 7.14780
 7.16527
 7.16834
 7.18084
 7.19091
 7.19071
 7.43845
 7.47004
 7.58204
 7.59705
 7.62175
 7.63343
 7.63780
 7.64110
 7.65380
 7.65787
 7.66173
 7.66543
 7.66903
 7.67253
 7.67603
 7.67953
 7.68303
 7.68653
 7.69003
 7.69353
 7.69703
 7.70053
 7.70403
 7.70753
 7.71103
 7.71453
 7.71803
 7.72153
 7.72503
 7.72853
 7.73203
 7.73553
 7.73903
 7.74253
 7.74603
 7.74953
 7.75303
 7.75653
 7.76003
 7.76353
 7.76703
 7.77053
 7.77403
 7.77753
 7.78103
 7.78453
 7.78803
 7.79153
 7.79503
 7.79853
 7.80203
 7.80553
 7.80903
 7.81253
 7.81603
 7.81953
 7.82303
 7.82653
 7.83003
 7.83353
 7.83703
 7.84053
 7.84403
 7.84753
 7.85103
 7.85453
 7.85803
 7.86153
 7.86503
 7.86853
 7.87203
 7.87553
 7.87903
 7.88253
 7.88603
 7.88953
 7.89303
 7.89653
 7.90003
 7.90353
 7.90703
 7.91053
 7.91403
 7.91753
 7.92103
 7.92453
 7.92803
 7.93153
 7.93503
 7.93853
 7.94203
 7.94553
 7.94903
 7.95253

ppm





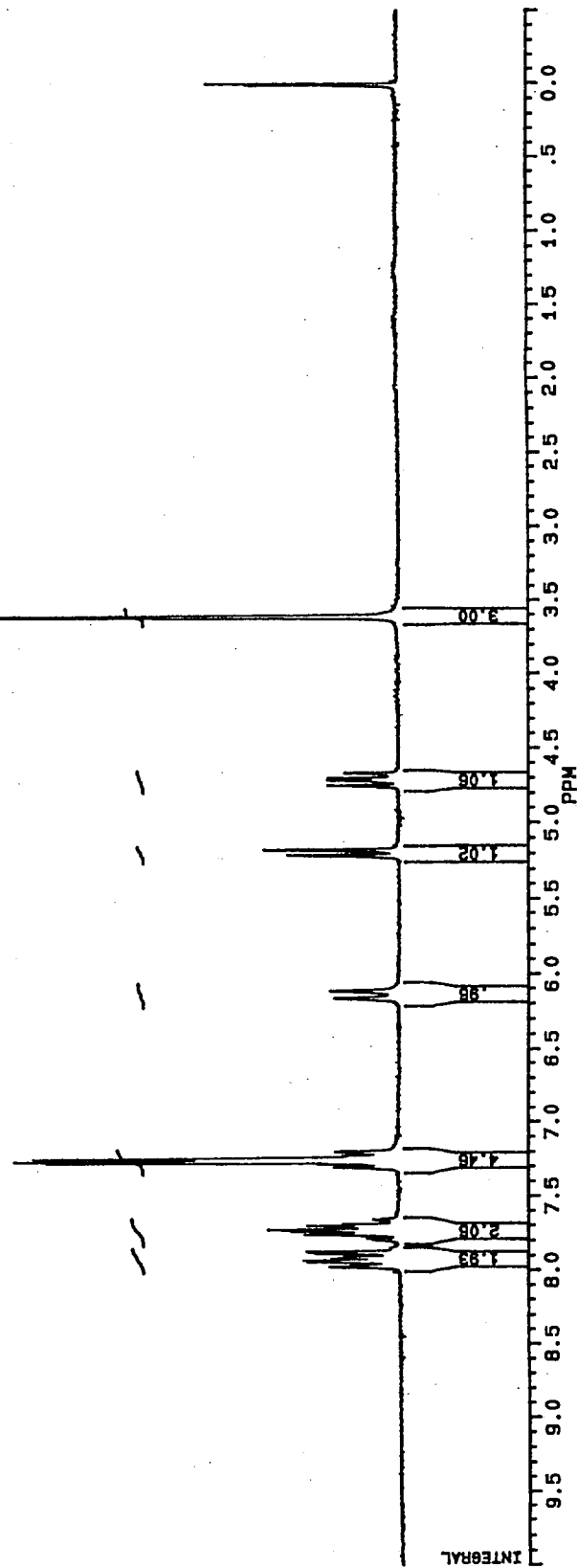
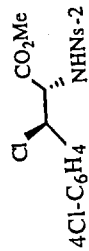
CPH216.002
 DATE 8-11-0
 SF 200.132
 SY 80.3300000
 O1 3472.000
 SI 16364
 TD 16364
 SM 3205.128
 HZ/PT .391
 PM 2.0
 RD 1.500
 AQ 2.556
 RG 40
 NS 40
 TE 297
 FW 4100
 O2 0.0
 DP 63L P0
 LB 0.0
 GB 0.0
 CX 30.00
 CY 16.00
 FI 10.000PF

0.1398
 0.0768
 0.0339
 0.0041

3.82176
 3.69878
 3.61778

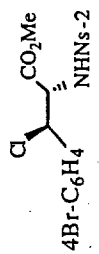
8.20894
 7.76378
 7.74741
 7.72237
 7.70567
 7.68934
 7.67301
 7.65668
 7.64034
 7.62401
 7.60768
 7.59134
 7.57501
 7.55868
 7.54234
 7.52601
 7.50968
 7.49334
 7.47701
 7.46068
 7.44434
 7.42801
 7.41168
 7.39534
 7.37901
 7.36268
 7.34634
 7.33001
 7.31368
 7.29734
 7.28101
 7.26468
 7.24834
 7.23201
 7.21568
 7.19934
 7.18301
 7.16668
 7.15034
 7.13401
 7.11768
 7.10134
 7.08501
 7.06868
 7.05234
 7.03601
 7.01968
 7.00334
 6.98701
 6.97068
 6.95434
 6.93801
 6.92168
 6.90534
 6.88901
 6.87268
 6.85634
 6.84001
 6.82368
 6.80734
 6.79101
 6.77468
 6.75834
 6.74201
 6.72568
 6.70934
 6.69301
 6.67668
 6.66034
 6.64401
 6.62768
 6.61134
 6.59501
 6.57868
 6.56234
 6.54601
 6.52968
 6.51334
 6.49701
 6.48068
 6.46434
 6.44801
 6.43168
 6.41534
 6.39901
 6.38268
 6.36634
 6.35001
 6.33368
 6.31734
 6.30101
 6.28468
 6.26834
 6.25201
 6.23568
 6.21934
 6.20301
 6.18668
 6.17034
 6.15401
 6.13768
 6.12134
 6.10501
 6.08868
 6.07234
 6.05601
 6.03968
 6.02334
 6.00701
 5.99068
 5.97434
 5.95801
 5.94168
 5.92534
 5.90901
 5.89268
 5.87634
 5.86001
 5.84368
 5.82734
 5.81101
 5.79468
 5.77834
 5.76201
 5.74568
 5.72934
 5.71301
 5.69668
 5.68034
 5.66401
 5.64768
 5.63134
 5.61501
 5.59868
 5.58234
 5.56601
 5.54968
 5.53334
 5.51701
 5.50068
 5.48434
 5.46801
 5.45168
 5.43534
 5.41901
 5.40268
 5.38634
 5.37001
 5.35368
 5.33734
 5.32101
 5.30468
 5.28834
 5.27201
 5.25568
 5.23934
 5.22301
 5.20668
 5.19034
 5.17401
 5.15768
 5.14134
 5.12501
 5.10868
 5.09234
 5.07601
 5.05968
 5.04334
 5.02701
 5.01068
 4.99434
 4.97801
 4.96168
 4.94534
 4.92901
 4.91268
 4.89634
 4.88001
 4.86368
 4.84734
 4.83101
 4.81468
 4.79834
 4.78201
 4.76568
 4.74934
 4.73301
 4.71668
 4.70034
 4.68401
 4.66768
 4.65134
 4.63501
 4.61868
 4.60234
 4.58601
 4.56968
 4.55334
 4.53701
 4.52068
 4.50434
 4.48801
 4.47168
 4.45534
 4.43901
 4.42268
 4.40634
 4.39001
 4.37368
 4.35734
 4.34101
 4.32468
 4.30834
 4.29201
 4.27568
 4.25934
 4.24301
 4.22668
 4.21034
 4.19401
 4.17768
 4.16134
 4.14501
 4.12868
 4.11234
 4.09601
 4.07968
 4.06334
 4.04701
 4.03068
 4.01434
 3.99801
 3.98168
 3.96534
 3.94901
 3.93268
 3.91634
 3.90001
 3.88368
 3.86734
 3.85101
 3.83468
 3.81834
 3.80201
 3.78568
 3.76934
 3.75301
 3.73668
 3.72034
 3.70401
 3.68768
 3.67134
 3.65501
 3.63868
 3.62234
 3.60601
 3.58968
 3.57334
 3.55701
 3.54068
 3.52434
 3.50801
 3.49168
 3.47534
 3.45901
 3.44268
 3.42634
 3.41001
 3.39368
 3.37734
 3.36101
 3.34468
 3.32834
 3.31201
 3.29568
 3.27934
 3.26301
 3.24668
 3.23034
 3.21401
 3.19768
 3.18134
 3.16501
 3.14868
 3.13234
 3.11601
 3.10068
 3.08434
 3.06801
 3.05168
 3.03534
 3.01901
 3.00268
 2.98634
 2.97001
 2.95368
 2.93734
 2.92101
 2.90468
 2.88834
 2.87201
 2.85568
 2.83934
 2.82301
 2.80668
 2.79034
 2.77401
 2.75768
 2.74134
 2.72501
 2.70868
 2.69234
 2.67601
 2.65968
 2.64334
 2.62701
 2.61068
 2.59434
 2.57801
 2.56168
 2.54534
 2.52901
 2.51268
 2.49634
 2.48001
 2.46368
 2.44734
 2.43101
 2.41468
 2.39834
 2.38201
 2.36568
 2.34934
 2.33301
 2.31668
 2.30034
 2.28401
 2.26768
 2.25134
 2.23501
 2.21868
 2.20234
 2.18601
 2.16968
 2.15334
 2.13701
 2.12068
 2.10434
 2.08801
 2.07168
 2.05534
 2.03901
 2.02268
 2.00634
 1.99001
 1.97368
 1.95734
 1.94101
 1.92468
 1.90834
 1.89201
 1.87568
 1.85934
 1.84301
 1.82668
 1.81034
 1.79401
 1.77768
 1.76134
 1.74501
 1.72868
 1.71234
 1.69601
 1.67968
 1.66334
 1.64701
 1.63068
 1.61434
 1.59801
 1.58168
 1.56534
 1.54901
 1.53268
 1.51634
 1.50001
 1.48368
 1.46734
 1.45101
 1.43468
 1.41834
 1.40201
 1.38568
 1.36934
 1.35301
 1.33668
 1.32034
 1.30401
 1.28768
 1.27134
 1.25501
 1.23868
 1.22234
 1.20601
 1.18968
 1.17334
 1.15701
 1.14068
 1.12434
 1.10801
 1.09168
 1.07534
 1.05901
 1.04268
 1.02634
 1.01001
 0.99368
 0.97734
 0.96101
 0.94468
 0.92834
 0.91201
 0.89568
 0.87934
 0.86301
 0.84668
 0.83034
 0.81401
 0.79768
 0.78134
 0.76501
 0.74868
 0.73234
 0.71601
 0.70068
 0.68434
 0.66801
 0.65168
 0.63534
 0.61901
 0.60268
 0.58634
 0.57001
 0.55368
 0.53734
 0.52101
 0.50468
 0.48834
 0.47201
 0.45568
 0.43934
 0.42301
 0.40668
 0.39034
 0.37401
 0.35768
 0.34134
 0.32501
 0.30868
 0.29234
 0.27601
 0.25968
 0.24334
 0.22701
 0.21068
 0.19434
 0.17801
 0.16168
 0.14534
 0.12901
 0.11268
 0.09634
 0.08001
 0.06368
 0.04734
 0.03101
 0.01468
 0.00834

ppm





DATE 8-11-0
 SF 200.132
 SY 80.1300000
 O1 3472.000
 SI 16384
 TD 16384
 SW 3205.128
 HZ/PT .391
 PW 2.0
 RD 1.500
 AG 2.556
 RG 40
 NS 40
 TE 297
 FM 4100
 O2 0.0
 DP 63L P0
 LB 0.0
 GB 0.0
 CX 30.00
 CY 10.00
 F1 10.000P
 F2 -500P
 HZ/CM 70.017
 PPM/CM .350
 SR 2339.33



00035

3.61485

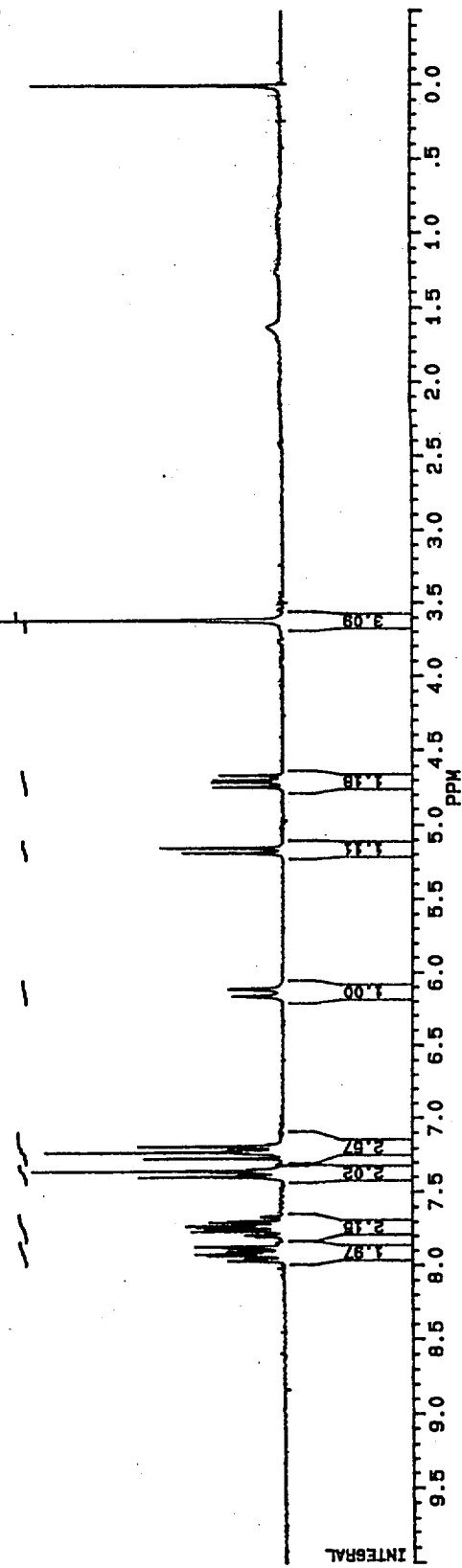
4.74978
 4.70848
 4.68818
 4.68075

5.18592
 5.15128

6.15743
 6.10884

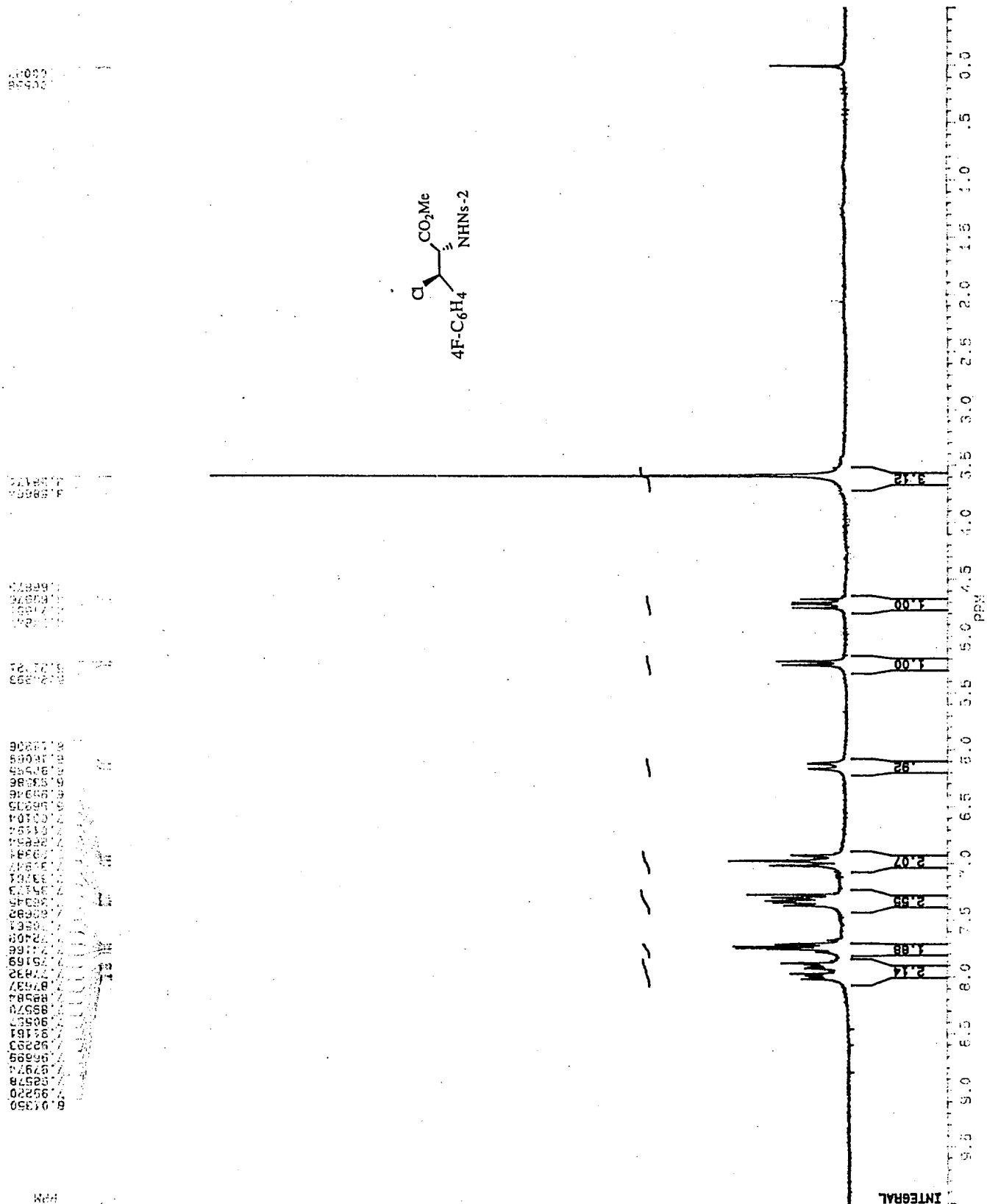
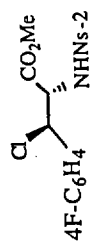
7.88800
 7.82381
 7.80519
 7.78728
 7.77019
 7.75378
 7.73790
 7.72264
 7.70790
 7.69368
 7.67998
 7.66680
 7.65414
 7.64202
 7.63044
 7.61940
 7.60890
 7.59894
 7.58952
 7.58064
 7.57230
 7.56450
 7.55724
 7.55052
 7.54434
 7.53870
 7.53360
 7.52904
 7.52502
 7.52154
 7.51860
 7.51620
 7.51434
 7.51300
 7.51220
 7.51194
 7.51220
 7.51254
 7.51290
 7.51336
 7.51392
 7.51458
 7.51534
 7.51620
 7.51716
 7.51822
 7.51938
 7.52064
 7.52200
 7.52346
 7.52502
 7.52668
 7.52844
 7.53030
 7.53226
 7.53432
 7.53648
 7.53874
 7.54110
 7.54356
 7.54612
 7.54878
 7.55154
 7.55440
 7.55736
 7.56042
 7.56358
 7.56684
 7.57020
 7.57366
 7.57722
 7.58088
 7.58464
 7.58850
 7.59246
 7.59652
 7.60068
 7.60494
 7.60930
 7.61376
 7.61832
 7.62308
 7.62794
 7.63290
 7.63796
 7.64312
 7.64838
 7.65374
 7.65920
 7.66476
 7.67042
 7.67618
 7.68204
 7.68800

ppm



8.01330

8.01330	200.133
7.92220	60.1300010
7.85278	34.1300
7.79771	18.000
7.65699	0.000
7.52200	0.000
7.41111	0.000
7.35711	0.000
7.28332	0.000
7.18110	0.000
6.91110	0.000
6.70000	0.000
6.60000	0.000
6.50000	0.000
6.40000	0.000
6.30000	0.000
6.20000	0.000
6.10000	0.000
6.00000	0.000



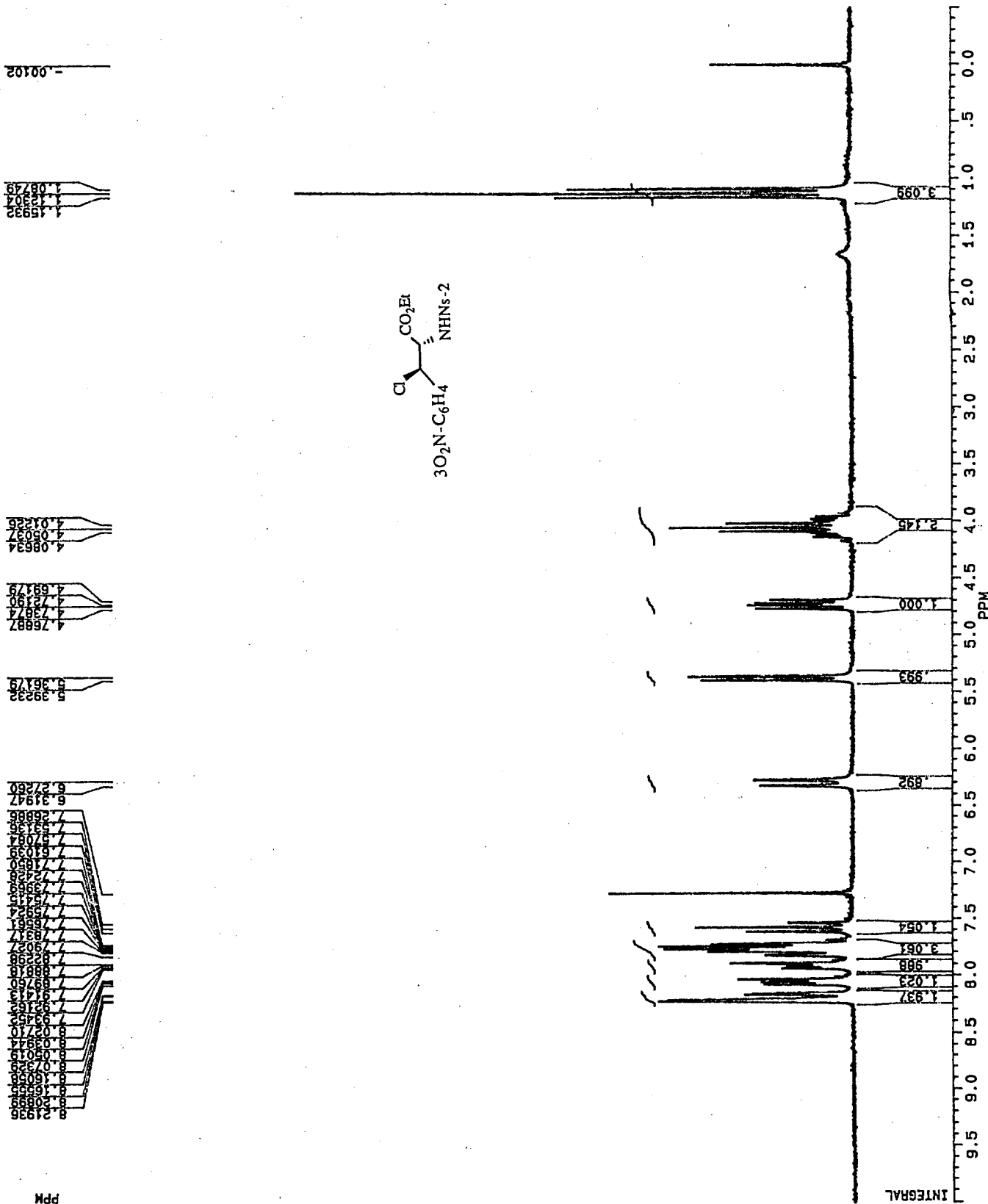
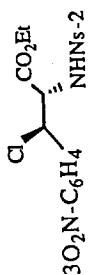
8.01330

8.01330	200.133
7.92220	60.1300010
7.85278	34.1300
7.79771	18.000
7.65699	0.000
7.52200	0.000
7.41111	0.000
7.35711	0.000
7.28332	0.000
7.18110	0.000
6.91110	0.000
6.70000	0.000
6.60000	0.000
6.50000	0.000
6.40000	0.000
6.30000	0.000
6.20000	0.000
6.10000	0.000
6.00000	0.000

0.000

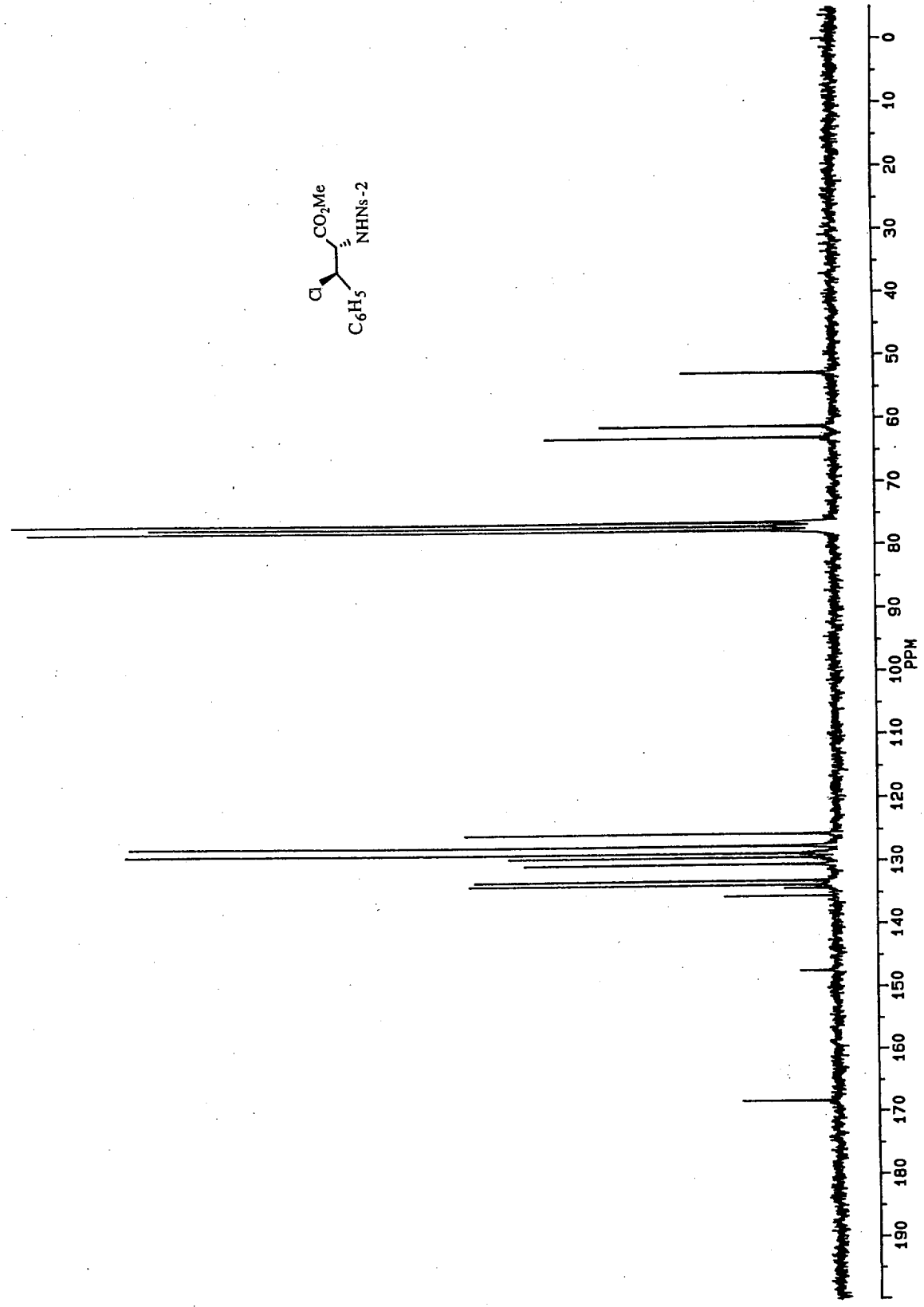
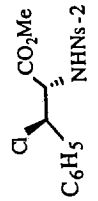


VTH0210.003
 DATE 3-11-0
 SF 200.132
 SY 80.1300000
 O1 3472.000
 SI 16384
 TD 16384
 SH 3205.128
 HZ/PT .391
 PW 2.0
 RD 1.500
 AG 2.556
 RG 20
 NS 24
 TE 297
 FW 4100
 O2 0.0
 DP 63L P0
 LB 0.0
 GB 0.0
 CX 30.00
 CY 14.00
 F1 10.000P
 F2 .500P
 HZ/CM 70.047
 PPM/CM .350
 SR 2338.55



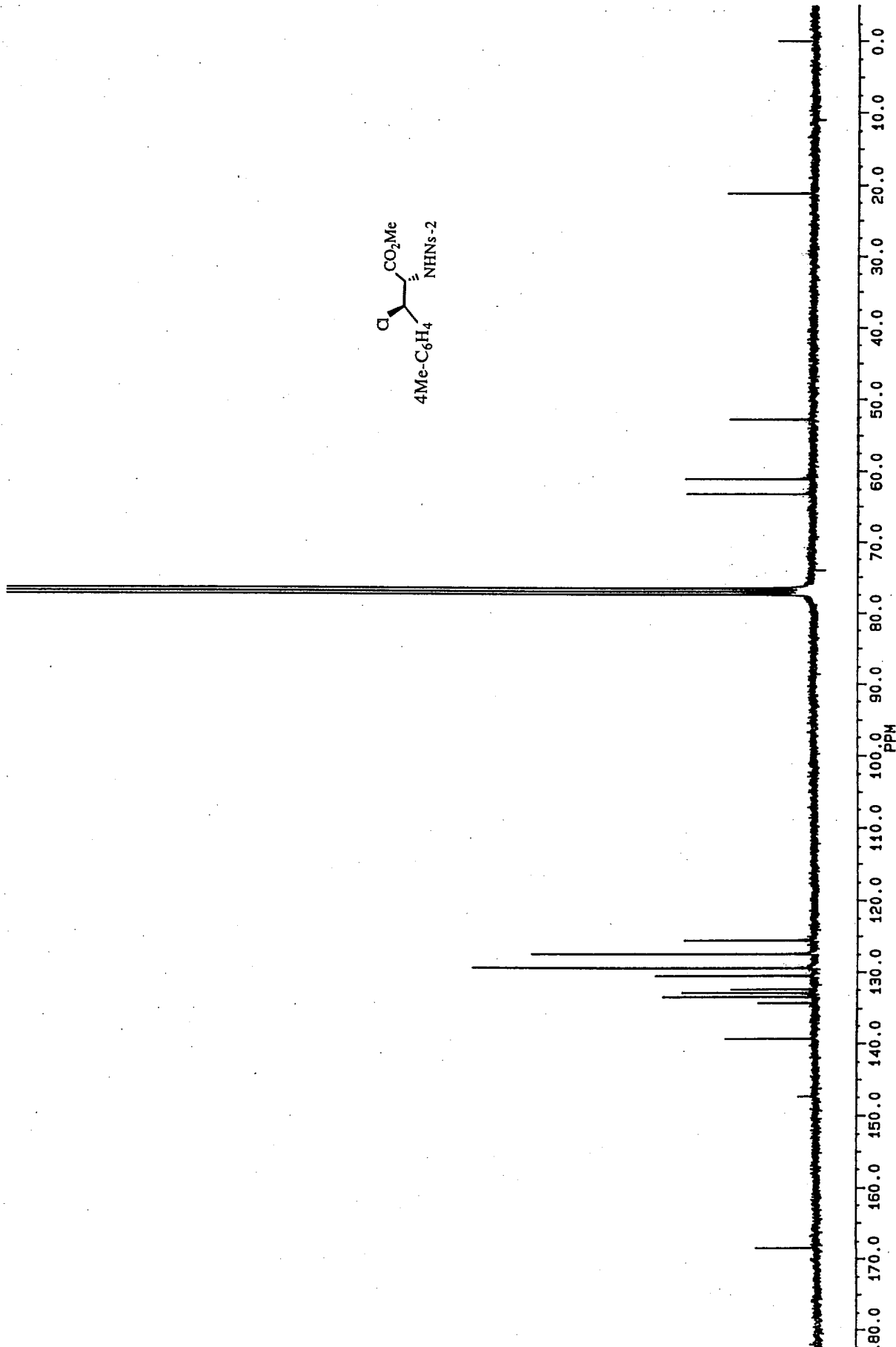
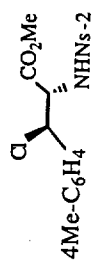


AU PROG: 50.323
POMGATE.AU 50.3270000
DATE 14-11-1 1606.000
SF 01 16384
SI 16384
TD 16384
SM 14285.714
HZ/PT 1.744
PW 6.4
RD 0.0
AG 0.573
RG 640
NS 6213
TE 297
FW 17900
O2 3215.000
DP 18H PD
LB 1.700
GB 0.0
CY 0.0
F1 200.019P
F2 -4.989P
HZ/CM 343.890
PPM/CM 6.834
SR -3683.17



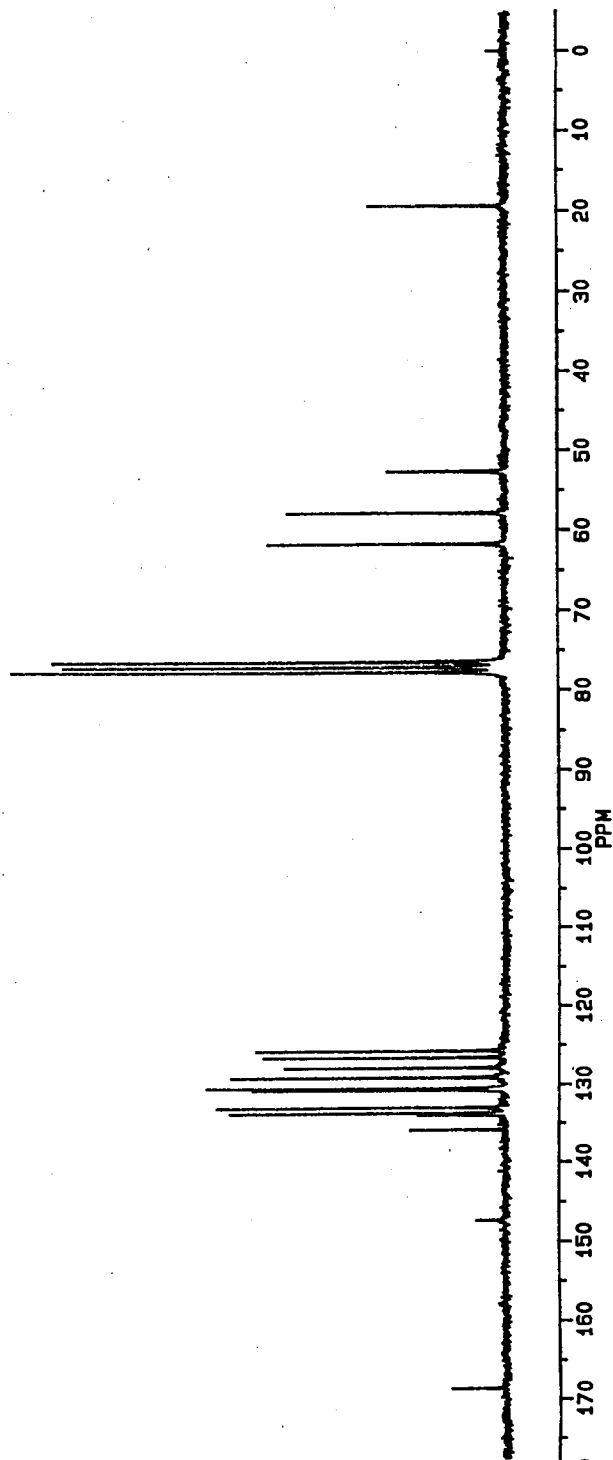
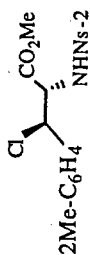


SHK03011
AU PROG: POMGATE-AI
DATE 1-3-0
SF 75.0
SY 75.0
O1 4061.1
SI 65536
TD 65536
SW 29411
HZ/PT
PW 4.0
RD 0.0
AG 1.0
RG 400
NS 2966
TE 297
FW 36800
O2 4430.0
DP 15H CPT
LB 0.0
GB 36.0
CX 21.0
CY 200.0
F1 -4.0
F2 HZ/CM 423.0
PPM/CW 5.0
SR -1404.0



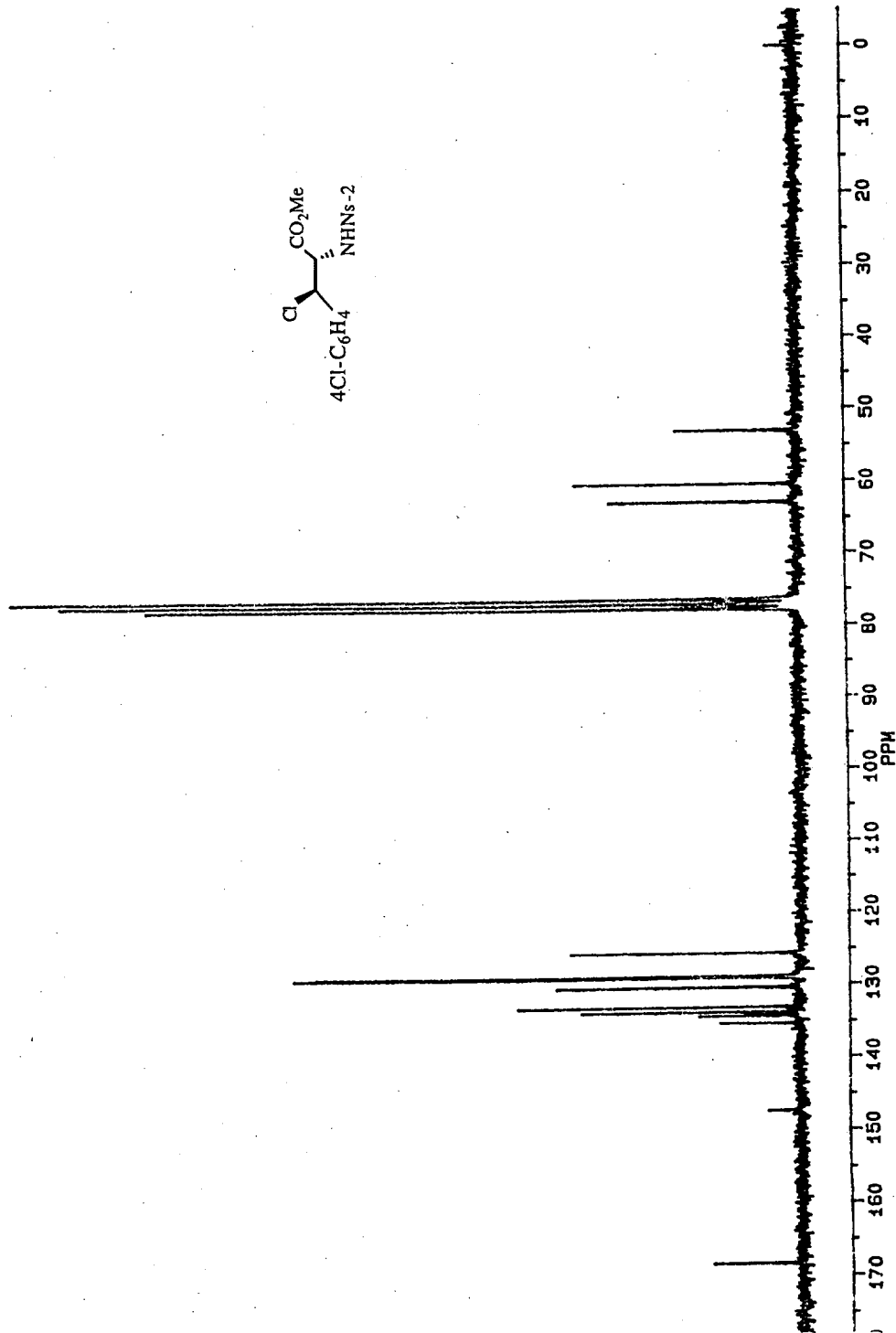
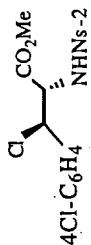


HMX1
AU PROG: POMGATE.AU
DATE 15-11-1
SF 50.323
SY 50.3270000
OI 1606.000
SI 16384
TD 16384
SM 14285.714
HZ/PT 1.744
PH 6.4
RD 0.0
AQ .573
RG 640
NS 6041
TE 297
FM 17900
DZ 3215.000
DP 18H P0
LB 1.700
GB 0.0
CX 30.00
CY 0.0
F1 200.019P
F2 -4.989P
HZ/CM 343.880
PPM/CM 6.834
SR -3681.42





SHK02291
 AU PROB:
 PORGATE.AU
 DATE 1-1-0
 SF 50.323
 SY 50.327000
 O1 1605.000
 SI 16384
 TD 16384
 SM 14285.714
 HZ/PT 1.744
 PM 6.4
 RD 0.0
 AQ .573
 RG 640
 NS 5161
 TE 297
 FM 17900
 O2 3215.000
 DP 18H PO
 LB 1.700
 GB 0.0
 CX 30.00
 CY 0.0
 F1 200.019P
 F2 -4.989P
 HZ/CM 343.890
 PPM/CM 6.834
 SR -3683.17





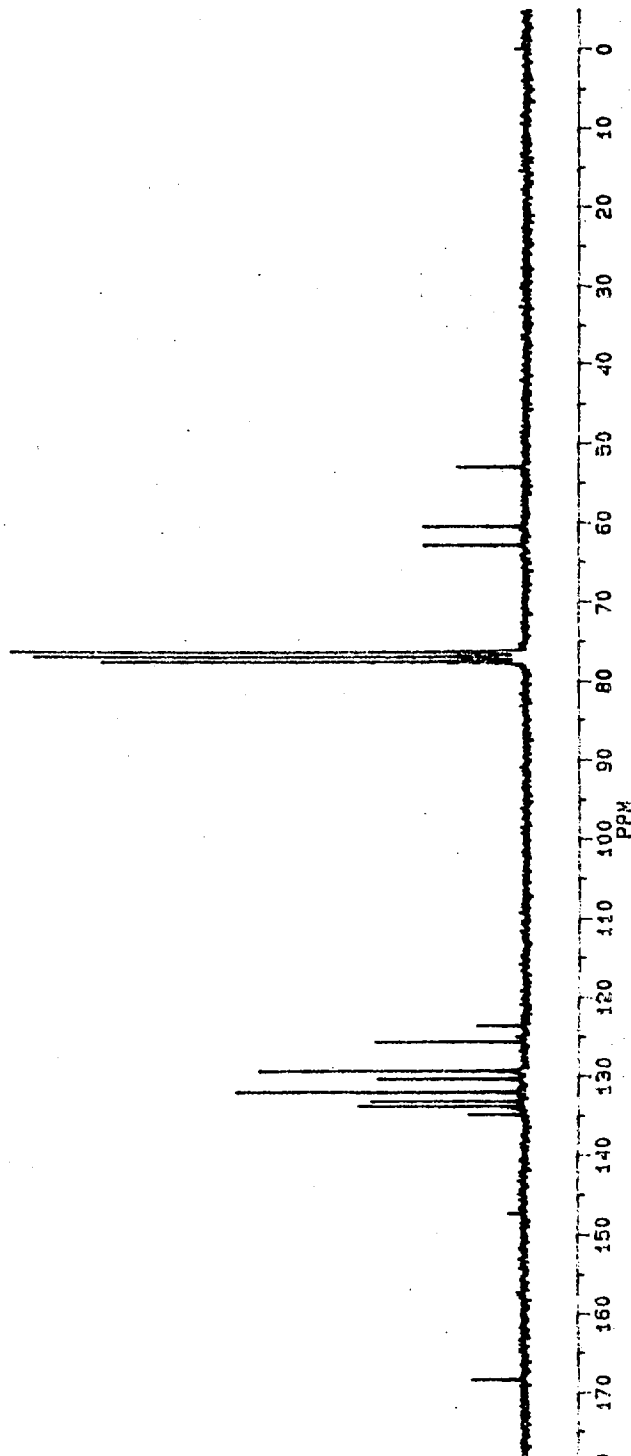
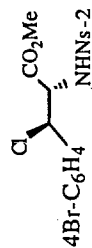
SHK03012
AU PROG:
POMGATE-AU
DATE 2-1-0

SF 50.323
SY 50.327000
O1 1606.000
SI 16384
TD 16384
SM 14285.714
HZ/PT 1.744

PH 6.4
RD 0.0
AQ .673
RG 640
NS 6130
TE 297

FW 17900
O2 3215.000
DP 18H P0

LB 1.700
GB 0.0
CX 30.00
CY 0.0
F1 200.019P
F2 -4.989P
HZ/CM 343.890
PPM/CM 6.834
SR -3683.17



~~BBUJX~~

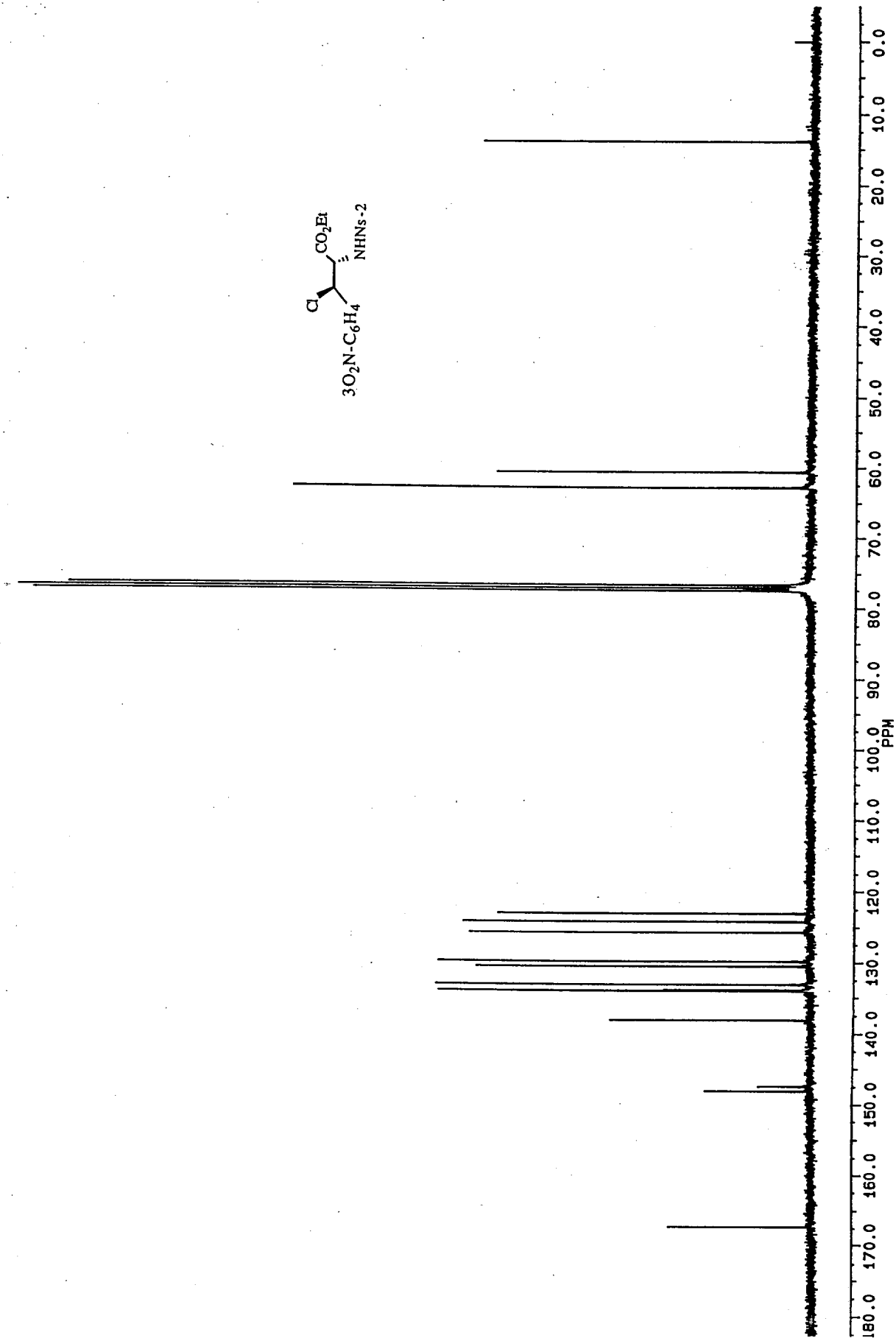
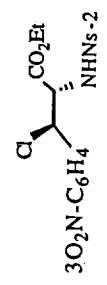
SHK02292
AU PROG: POMGATE.A
DATE 29-2-

SF 75.
SY 01
O1 4061.
SI 65536
TD 65536
SM 29411.
HZ/PT

PW 4.
RD 0.1
AQ 1.
RG 400
NS 2894
TE 297

FW 36800
O2 4430.
DP 15H CPI

LB 0.
GB 36.
CX 21.
CY 200.
F1 -4.
F2 HZ/CM 423.
PPM/CM 5.
SR -1403.





SHK03021
AU PROG:
PONGATE.AU
DATE 3-1-0

SF 50.3
SY 50.3270
O1 1606.0
SI 16384
TD 16384
SM 14285.7
HZ/PT 1.7

PW 6.4
RD 0.0
AQ 0.5
RG 640
NS 5814
TE 297

FW 17900
O2 3215.0
DP 18H P0

LB 1.71
GB 0.0
CX 36.51
CY 0.0
F1 200.0
F2 -4.91
HZ/CM 282.6
PPM/CM 5.6
SR -3663.1

